



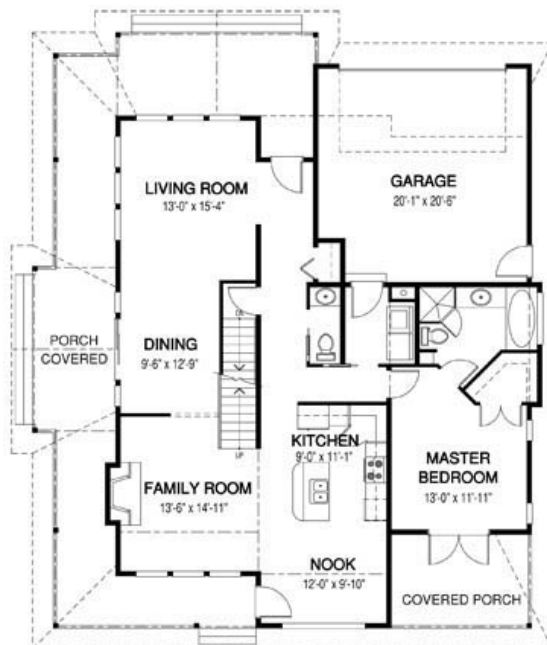
Timber Ridge HOMES

*Design-Built quality custom homes in Urban,
Rural and Recreational settings in B.C. and Alberta*

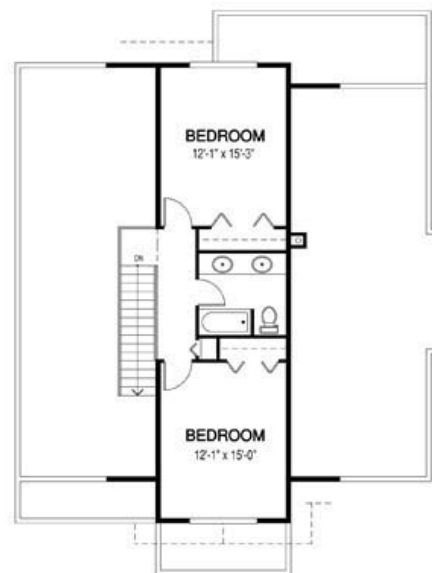
the Osprey 1



Width: 49 ft | Depth: 58 ft | Main Floor: 1453 sq.ft. | Upper Floor: 587 sq.ft. | Total Area: 2040 sq.ft.



MAIN FLOOR



UPPER FLOOR

Contact us today for more details and pricing: www.timberidge-homes.com 1 - (888) 291-7040
An optional **basement/walkout, Garage** (attached, detached or semi-detached) can be added to every design