



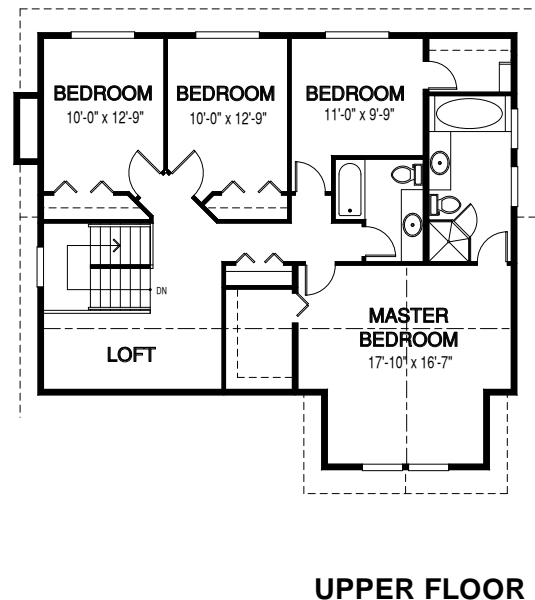
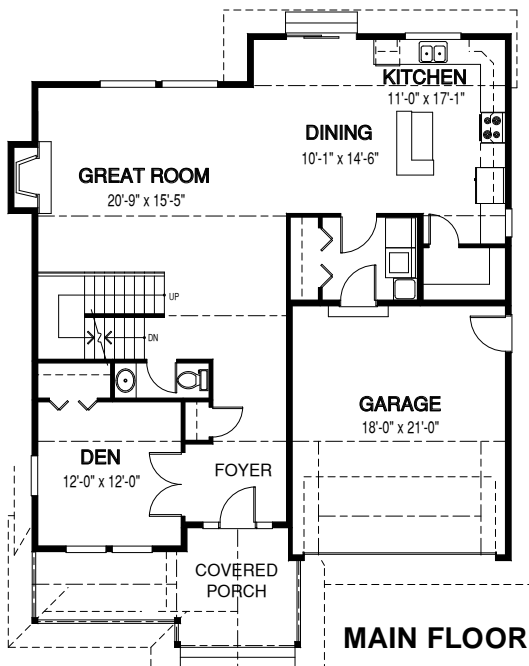
# Timber Ridge HOMES

*Design-Built quality custom homes in Urban,  
Rural and Recreational settings in B.C. and Alberta*

## *the Dogwood 1*



Width: 40 ft    Depth: 50 ft    Main Floor: 1265 sq.ft.    Upper Floor: 1229 sq.ft.    Total Area: 2494 sq.ft.



Contact us today for more details and pricing: [www.timberidge-homes.com](http://www.timberidge-homes.com) 1 - (888) 291-7040  
An optional **basement/walkout, Garage** (attached, detached or semi-detached) can be added to every design