

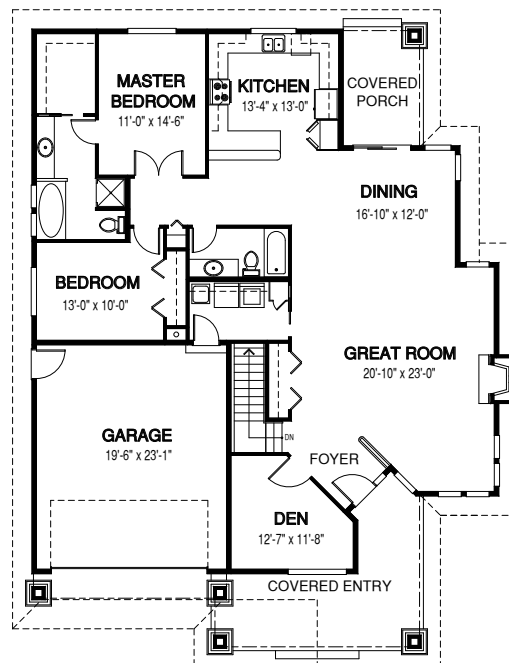
Timber Ridge HOMES

the Curzon

*Design-Built quality custom homes in Urban,
Rural and Recreational settings in B.C. and Alberta*



Width: 48 ft Depth: 64 ft Main Floor: 1854 sq.ft. Upper Floor: - Total Area: 1854 sq.ft.



MAIN FLOOR

Contact us today for more details and pricing: www.timberidge-homes.com 1 - (888) 291-7040
An optional **basement/walkout, Garage** (attached, detached or semi-detached) can be added to every design