



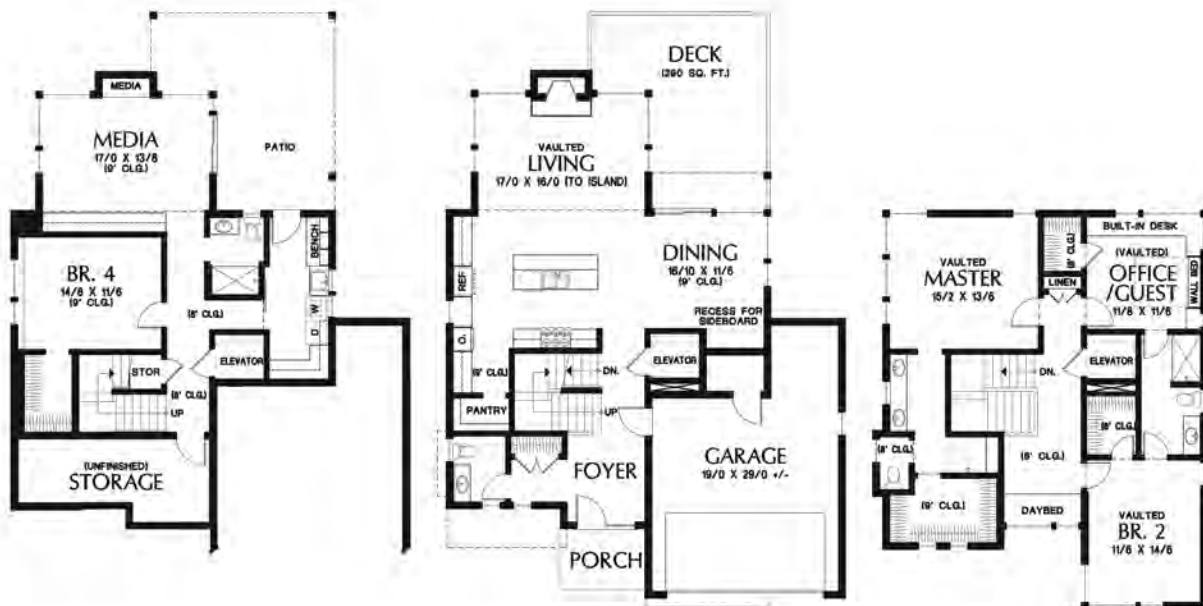
Timber Ridge HOMES

the Boulevard

*Design-Built quality custom homes in Urban,
Rural and Recreational settings in B.C. and Alberta*



Width: 41 ft Depth: 52 ft Main Floor: 1023 sq.ft. Upper Floor: 1103 sq.ft. Total Area: 2126 sq.ft.



OPTIONAL BASEMENT

MAIN FLOOR

UPPER FLOOR

Contact us today for more details and pricing: www.timberidge-homes.com 1 - (888) 291-7040
An optional **basement/walkout, Garage** (attached, detached or semi-detached) can be added to every design