

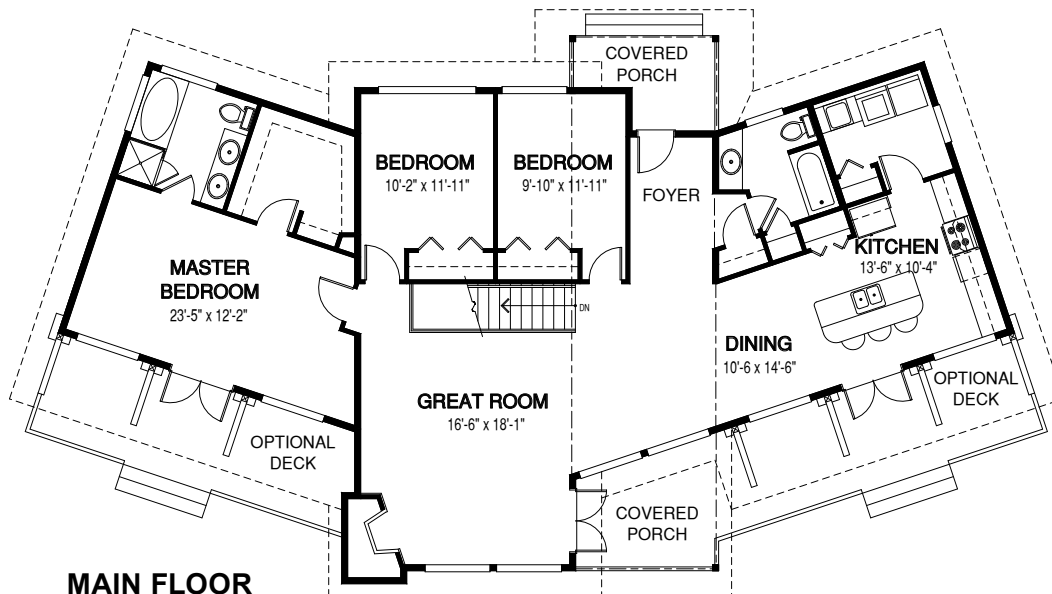


*the Albion*

*Design-Built quality custom homes in Urban,  
Rural and Recreational settings in B.C. and Alberta*



Width: 74 ft | Depth: 43 ft | Main Floor: 1828 sq.ft. | Upper Floor: - | Total Area: 1828 sq.ft.



Contact us today for more details and pricing: [www.timberidge-homes.com](http://www.timberidge-homes.com) 1 - (888) 291-7040  
An optional **basement/walkout, Garage** (attached, detached or semi-detached) can be added to every design