

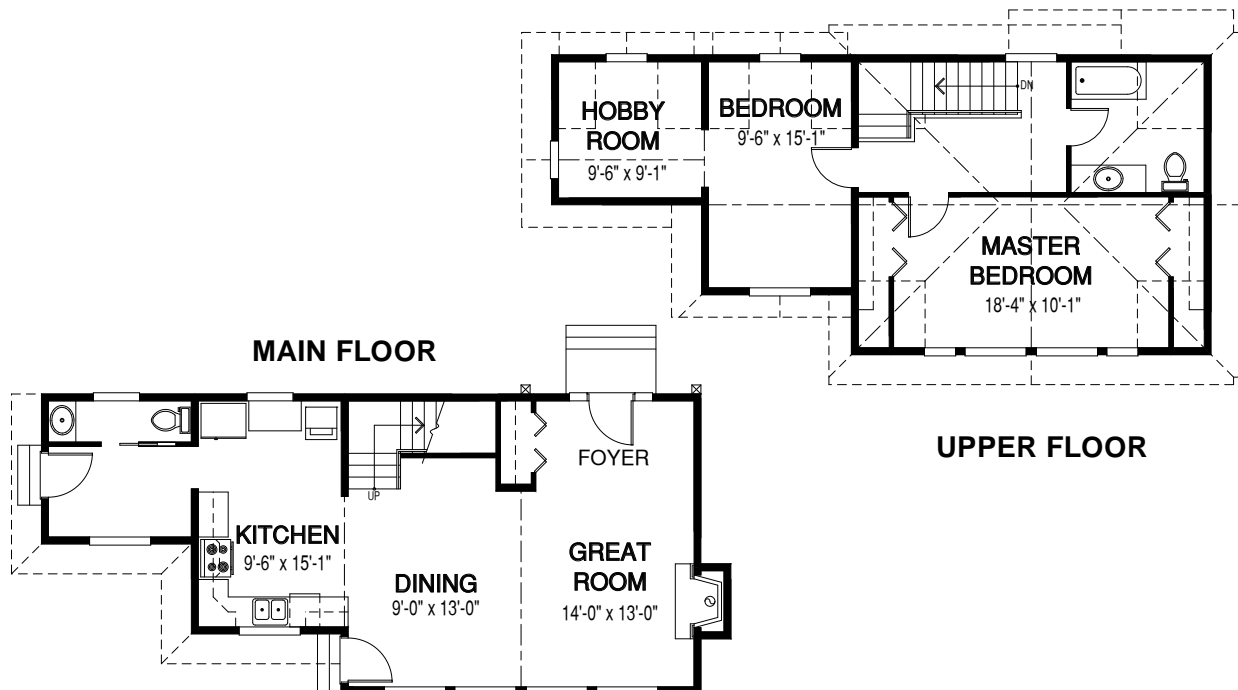
# Timber Ridge HOMES

*Design-Built quality custom homes in Urban,  
Rural and Recreational settings in B.C. and Alberta*

## *the Greenbay*



Width: 44 ft | Depth: 20 ft | Main Floor: 740 sq.ft. | Upper Floor: 692 sq.ft. | Total Area: 1432 sq.ft.



Contact us today for more details and pricing: [www.timberidge-homes.com](http://www.timberidge-homes.com) 1 - (888) 291-7040  
An optional **basement/walkout, Garage** (attached, detached or semi-detached) can be added to every design