



# Timber Ridge

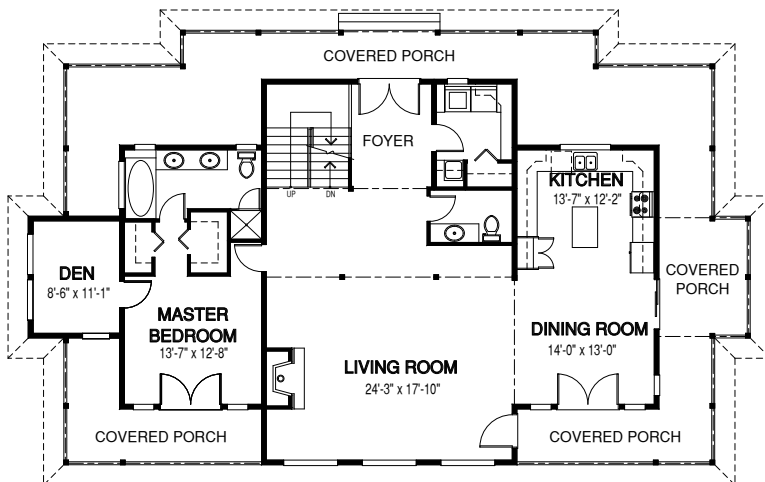
HOMES

## *the Woodview*

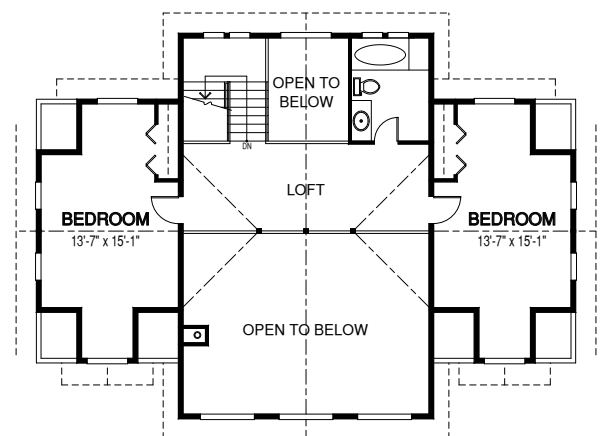
*Design-Built quality custom homes in Urban,  
Rural and Recreational settings in B.C. and Alberta*



Width: 72 ft    Depth: 43 ft    Main Floor: 1792 sq.ft.    Upper Floor: 935 sq.ft.    Total Area: 2727 sq.ft.



**MAIN FLOOR**



**UPPER FLOOR**

Contact us today for more details and pricing: [www.timberidge-homes.com](http://www.timberidge-homes.com) 1 - (888) 291-7040  
An optional **basement/walkout, Garage** (attached, detached or semi-detached) can be added to every design