



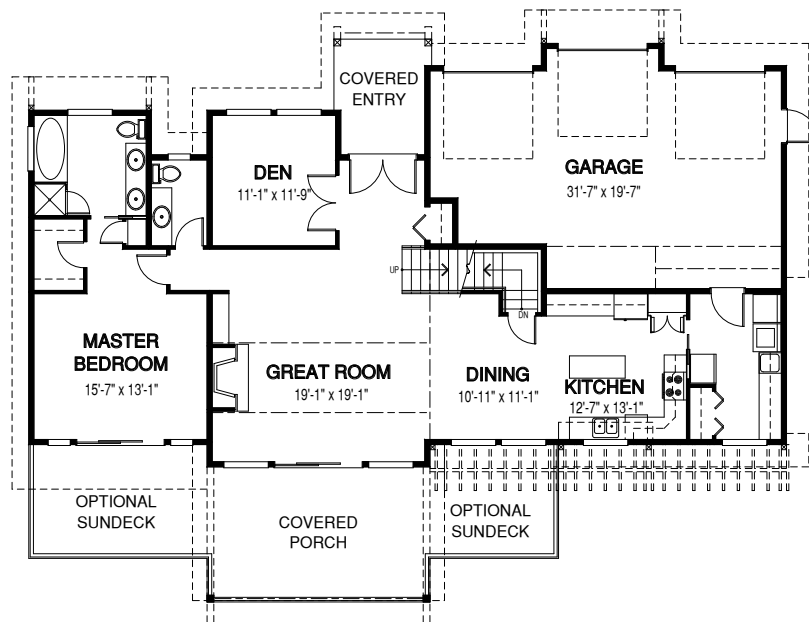
Timber Ridge HOMES

the Tobiano

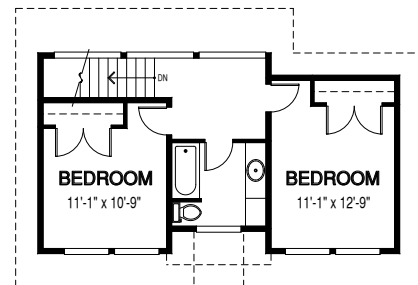
*Design-Built quality custom homes in Urban,
Rural and Recreational settings in B.C. and Alberta*



Width: 68 ft Depth: 51 ft Main Floor: 1568 sq.ft. Upper Floor: 502 sq.ft. Total Area: 2070 sq.ft.



MAIN FLOOR



UPPER FLOOR

Contact us today for more details and pricing: www.timberidge-homes.com 1 - (888) 291-7040
An optional **basement/walkout, Garage** (attached, detached or semi-detached) can be added to every design